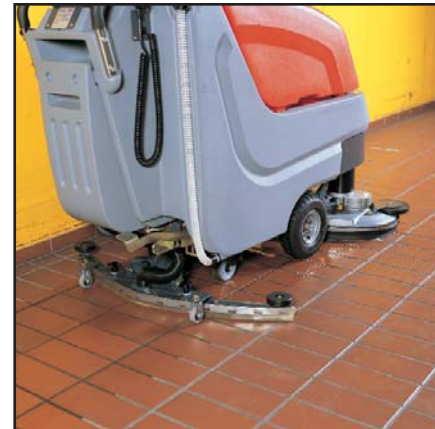


Specifications	Phoenix 26	Phoenix 28	Phoenix 30
Working width	24 in (60 cm)	26 in (65 cm)	28 in (71 cm)
Squeegee width	37.4 in (95 cm)	37.4 in (95 cm)	43 inch (109 cm)
Theoretical area of performance	34,445 ft <sup>2</sup> /hr (3,200 m <sup>2</sup> )	34,445 ft <sup>2</sup> /hr (3,200 m <sup>2</sup> )	37,673 ft <sup>2</sup> /hr (3,500 m <sup>2</sup> )
Actual area of performance	23,680 ft <sup>2</sup> / hr (2,200 m <sup>2</sup> )	25,640 ft <sup>2</sup> /hr (2,382 m <sup>2</sup> )	28,000 ft <sup>2</sup> /hr (3,200 m <sup>2</sup> )
Working speed	3 mph (5 km per hr)	3.1 mph (5 km per hr)	3.1 mph (5 km per hr)
Rated voltage	24 volts	24 volts	24 volts
Vacuum cfm	65 cfm	65 cfm	65 cfm
Vacuum waterlift	65 inches (165 cm)	65 inches (165 cm)	65 inches (165 cm)
Vacuum HP	.42 HP	.42 HP	.42 HP
Drive motor HP	.40 HP	.40 HP	.70 HP
Brush Type	Cylindrical	Disc	Cylindrical
Brush motor(s) HP	1 HP	.75 HP (2)	1.2 HP
Number of brushes	2	2	2
Brush diameter	24 in (60 cm)	26in (65 cm)	28in (71 cm)
Brush RPM	850 RPM	180 rpm	850 RPM
Aqua-Stop Equipped	N/A	Yes	N/A
Solution capacity	19 Gal (72 liters)	22.5 Gal (85 liters)	22.5 Gal (85 liters)
Recovery capacity	19.5 Gal (74 liters)	22.5 Gal (85 liters)	22.5 Gal (85 liters)
Dry Weight	375 lbs. (170 kg)	570.6 lbs (258.5 kg)	570.6 lbs (258.5 kg)



**PowerBoss is proud to be BLUE!**  
What does it mean to be BLUE?



- **Water Conservation** – Aqua-Stop saves water usage by 50%, water is released through a pump system providing greater control of water usage than gravity systems
- **Clean Air** - High-performance filter system dramatically reduces the release of dust and debris back into the air, dust vacuum ensures that dust is put directly into the hopper, bristle pattern on main broom increases dust control
- **Lower Emissions** – All gas and LP engines meet Tier 2 specifications, catalyst mufflers, battery operated available, diesel operated available, bio-diesel fuel can be used in Kubota engine
- **Safer Work Environment** – Orange machines are highly visible to others in the workplace, simple controls reduce operator error, one-button scrub, horn, fire in hopper indicator, effective braking system, "belly bar" prevents operator from being pinned behind machine when in reverse, parabolic squeegee picks up all water leaving the scrub path virtually dry for traffic, seat equipped with safety shut-off switch, also available: overhead guard, back-up alarm, warning beacon
- **Clean Energy** – Battery operated available, bio-diesel fuel can be used in Kubota engines
- **Lower Chemical Reliance** – Aqua-Stop saves chemical usage by 50%, pump system for water and chemical release allows for better control of chemical usage, chemical metering system is available as an option and regulates chemical usage to the correct dose

*Features listed are general for PowerBoss equipment; each machine has different features and therefore, may or may not fill all of the features listed above.*



PowerBoss, Inc.  
175 Anderson Street Aberdeen, NC 28315  
Phone: 910-944-2105 Fax: 910-944-7409  
A Member of the Hako Group

Come Visit our Website at  
[www.powerboss.com](http://www.powerboss.com)

**Phoenix 26, 28 & 30**  
**Walk-Behind Scrubbers**

# Easy handling, superb performance, environmentally-friendly.

## Performance:

- The Phoenix 26 and 30 have cylindrical brush decks with integrated sweeping function. The cylindrical deck is made of corrosion-resistant aluminum casting.
- The Phoenix 28 is a disc model equipped with Aqua-Stop
- Two powerful brush motors guarantee an even cleaning result across the whole width of the machine.
- The direct Brush Release System (**BRS**) allows brushes to be changed quickly.
- Battery running time to suit the application, on-board charger standard.
- Phoenix 26 has a 19 gal solution tank and a 19.5 gal recovery tank.
- Phoenix 28 and 30 have a 22.5 gal solution tank and a 22.5 gal recovery tank.
- Flow-optimized dirty water tank with **AFS** (Anti Foam System) to protect the vacuum turbine. As a result of the large tank lid, easy access for cleaning purposes.
- Even given difficult floor conditions, optimum pick-up of cleaning solution thanks to a new kind of squeegee with additional Quick Adjust System. Quick-clamping device for squeegee which can be used four times and are highly-resistant to wear.



## Comfort:

- Easy, ergonomic operation as a result of the compact, maneuverable construction.
- Simple, easy-to-understand controls ensure that the machine is quickly mastered and maintenance is easy.
- Ergonomic, adjustable speed regulation.
- Ergonomic hand bails offer great control of the machine.
- Designed to give the operator more room for their feet while operating the Phoenix 26, 28 or 30.
- Designed to give the operator an excellent line of sight to the area that needs to be cleaned.



Phoenix 26 and 30



Phoenix 28

Low brush deck is ideal for cleaning underneath obstacles.



Squeegee provides optimum pick-up of dirty water, making the floor traffic-ready almost immediately.



Large tank lid provides access for easy clean out.



Large tank opening allows for fast fill and automatic filling systems.



Easy access to the batteries and drive system for service and maintenance.



Simplified and easy-to-understand operator controls.

## Convenience:

- Low brush deck is ideal for cleaning underneath obstacles such as skids, warehouse racks and other stationary objects.
- Large tank opening in clean water tank saves time when filling using automatic filling systems. Run time and tank filling are in tune with each other.
- Service-friendly access to batteries and drive.
- "Silencer" option means significant noise reduction.
- On-board charger is convenient and allows you to charge the Phoenix 26, 28 or 30 anywhere.